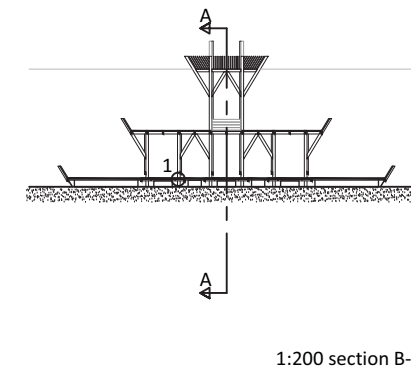
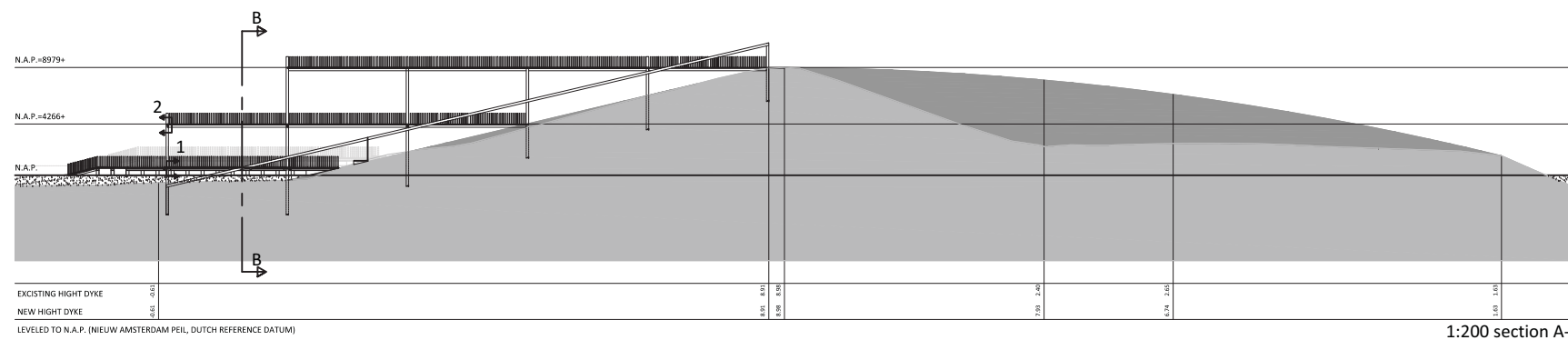
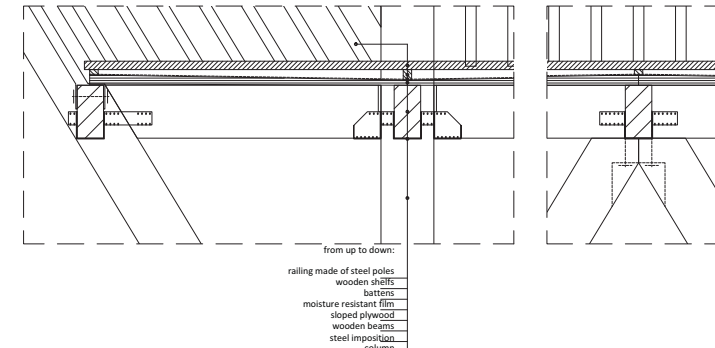
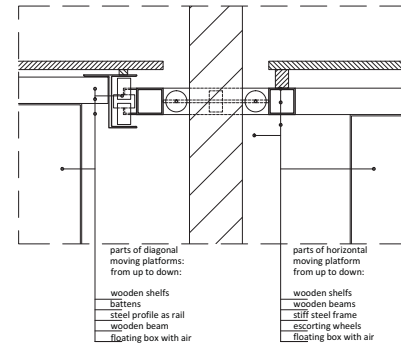
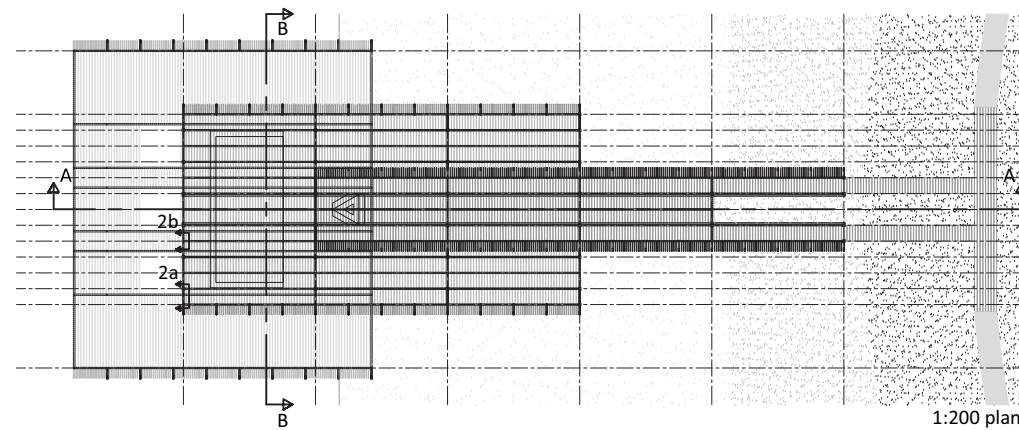
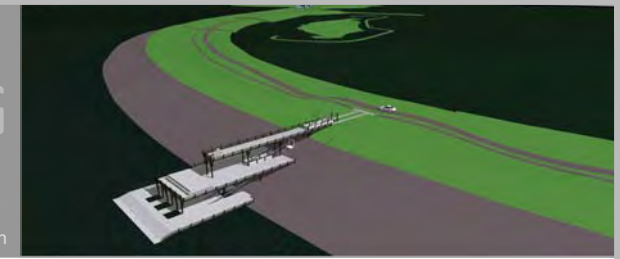


# THE WADDEN-CONNECTOR LAUWERSOOG

Project: Northern Space, Mentor: Jos Bosman, Creator: Tijmen Stuurman



**1. INVITATION.**  
Invitation is where the whole point of this structure starts. The Wadden-Connector is a structure that invites you to go over the dike and smell the mud for a second. The simple diagonal lift in the structure literally invites everyone to stand/ sit on this structure and by that on the sea side of the dike.

**2. ARRIVAL.**  
This structure lays near a popular and central place on a busy road towards it. There is almost no chance that you'll miss it on your stay at Lauwersoog. The Wadden-Connector makes you even more curious of what is behind the dike when you pass by.

**3. ORIENTATION.**  
The Wadden-Connector is visible when you pass by car or when you walk on the sea side of the dike. When you are not on the structure you won't be able to understand it. This will help the curiosity grow, which makes it more likely that a good use of the structure will be found.

**4. STAY.**  
The Wadden-Connector moves with the environment and shows it. To be able to properly sit down and watch the boats, mud and lake makes you want to stay. This structure is capable of having events on it. If it is used right, it can be a main element of the area of Lauwersoog and Lauwersmeer.

**5. LEAVE.**  
When all is seen from the Wadden-Connector, you'll be noticed of what is around. This especially counts for the sea side of the dike, which is separated from the land by the dike.

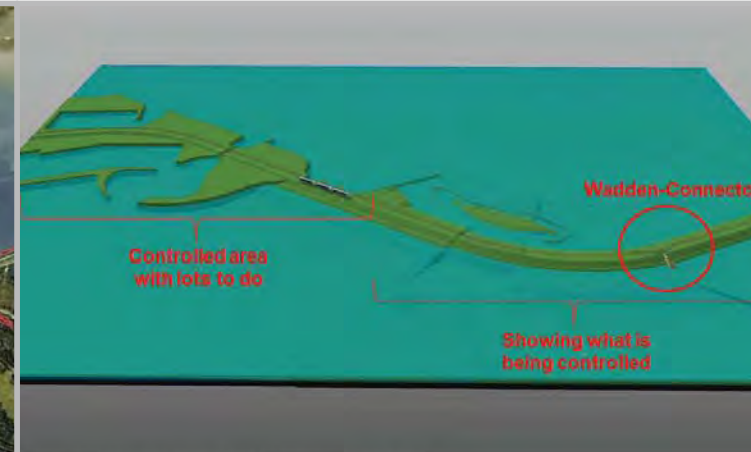
**6. FOLLOW-UP.**  
When someone have experienced the Wadden-Connector, he/ she has seen the difference between the sea side and the land side. Hopefully this will make it more likely for the visitor to see more of what is behind the dike in the future.



Lauwersoog is a great central connection point of the Wadden area



This point on the dike is a great central connection point of Lauwersoog



The Wadden-Connector is not about something new, but showing what is already there



Dyke monuments are often about the hard labour that is put in it. This structure is focusing on the result!

